



Make America's Coal Great Again



The Coal Institute
Caryl Pfeiffer
July 18, 2017



Tenets of the Executive Office

- Energy Dominance
- Economic Growth



Home Grown Fossil Fuels

- Energy “Permitting”
- Right-Size Federal Regulatory Programs
- Eliminate Policy Directives, Guidance Documents, MOAs
- Devolve Implementation Authority to the States



EPA-Air



- New Source Performance Standards for GHG Emissions from Electric Utility Generating Units-111(b)
- Existing Source Performance Standards for GHG Emissions from Electric Utility Generating Units-111(d)
- Clean Power Plan
- Social Cost of Carbon
- Guidance Requiring the Assessment of GHG Emission Impacts under NEPA
- Mercury and Air Toxics Standards
- National Ambient Air Quality Standards

EPA-Land

- Coal Combustion Residuals Rule



EPA-Water

- Effluent Limitation Guidelines for Steam Electric Power Generating Point Source Category
- Waters of the United States (CORPS Sec. 404 Permits)



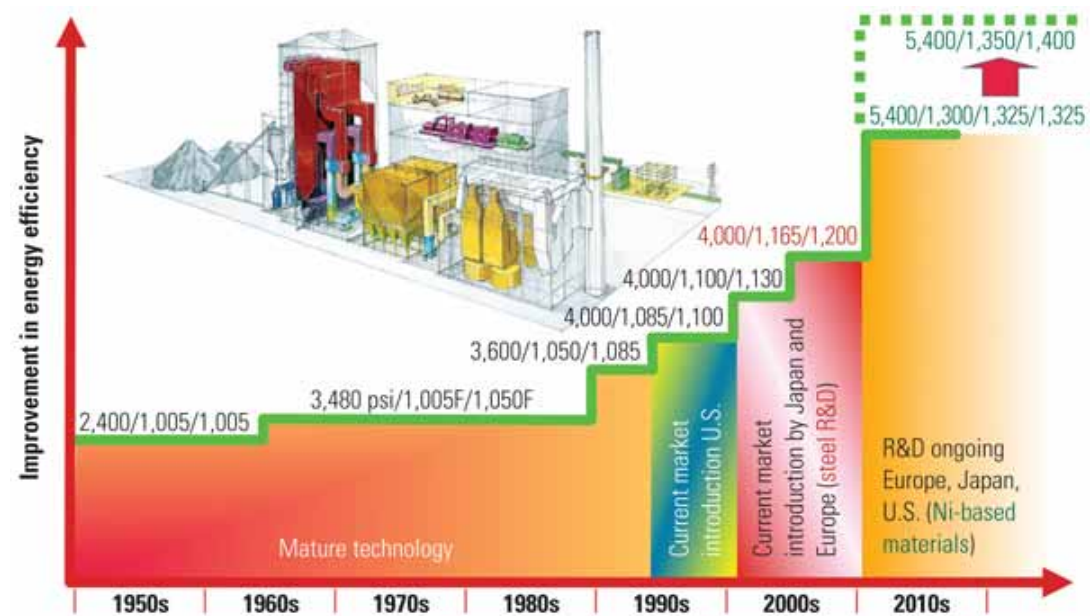
DOI

- Stream Protection Rule
- Federal Coal Leasing Program



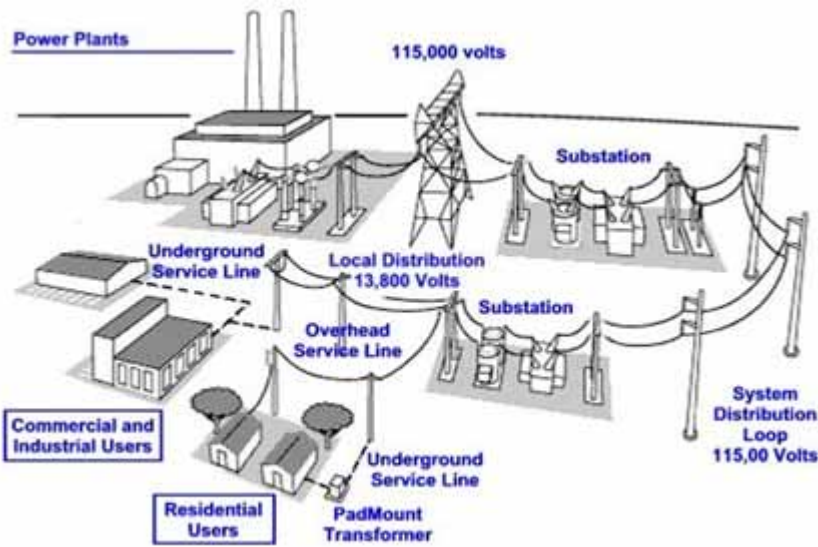
DOE

- Increase Efficiency/Decrease Costs/Increase Reliability of Existing Coal-Fired Power Plants
- Advanced Power Systems



FERC

- Reliability
- Grid Stability/Resiliency
- Energy Diversity/Security



Economic Growth at Home

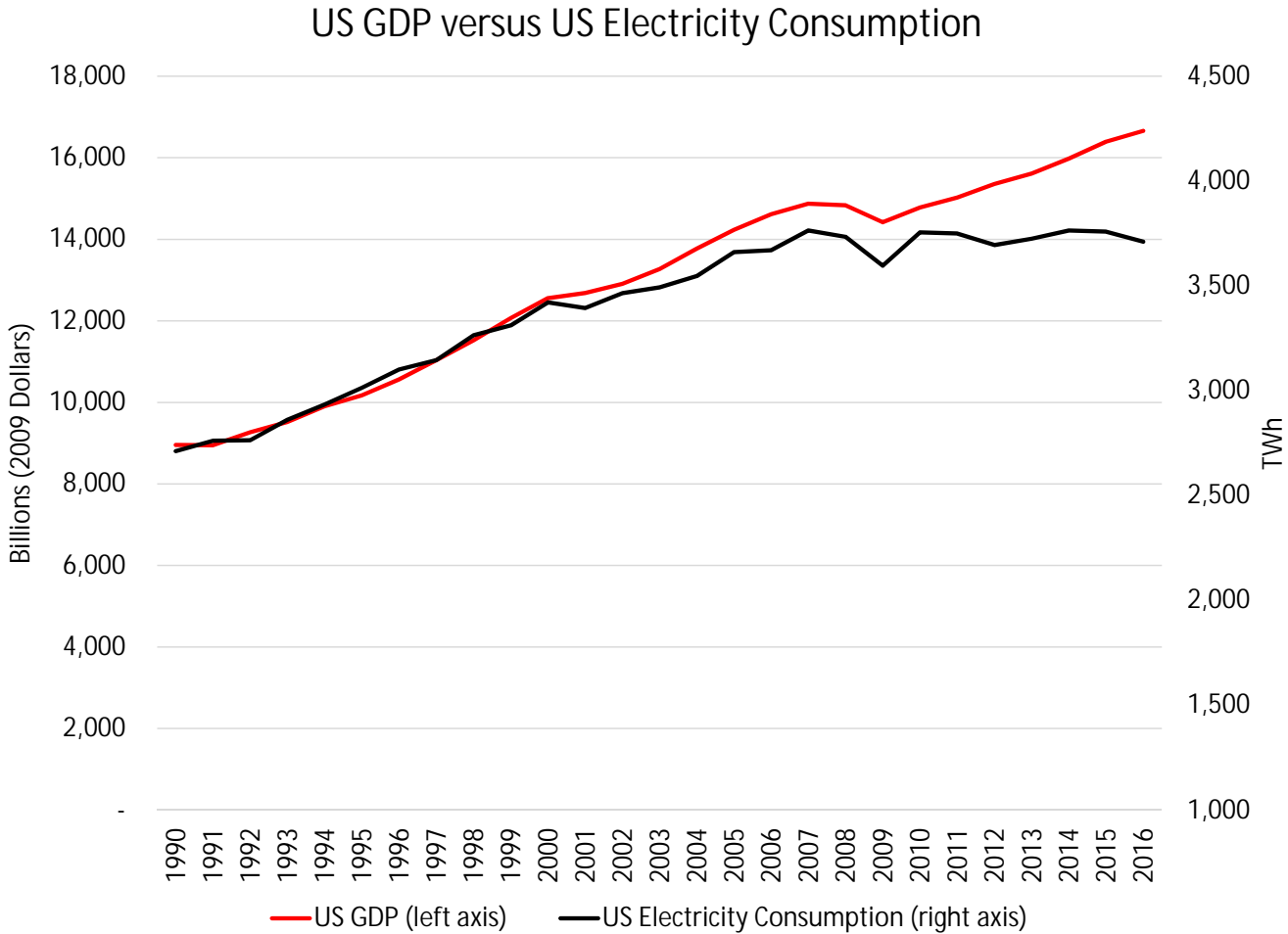
- Infrastructure
- Electricity Growth-Return to Manufacturing
- Middle Class Employment



Transportation



US Electricity Consumption was Flat from 2007 to 2016



Flat Sales Trend Impacted by End-Use Efficiency Gains

- LED Lighting
 - Costs have fallen 97+% since 2008; efficiency expected to double by 2025.
 - Department of Energy forecasts 48% market share by 2020; 84% in 2030, up from 2% in 2013. This would reduce lighting consumption by 15% in 2020 and 40% in 2030.

LED Lighting: Global Cost and Installation Trends

